



ANNUAL **REPORT** 2018-19

 The
Gateway
Schools

THE
GATEWAY
SCHOOL OF
MUMBAI

THE KESHAVLAL V. BODANI EDUCATION FOUNDATION

SIDDHESH'S STORY: Student Spotlight

Siddhesh joined Gateway School of Mumbai in 2013 as a bright, young teenager, with an avid interest in cars and a dry sense of humour. He struggled to regulate his emotions, demonstrate his skills, participate in gym class and learn effectively in group settings. He found it particularly hard to adjust to changes in schedule.

For five years at Gateway, Siddhesh worked hard and completed his 10th Grade examinations. He channeled his love for cars into a year-long internship at an automobile products and service company. Siddhesh thrived at his internship, staying back longer hours and going on days even when school was closed.

By 2018, when he turned 18, he had formed close bonds with his peers who he called his friends, had begun driving to school, travelled by Uber independently, and successfully graduated from NIOS 12th.



“

It's Gateway School that helped me improve... helped me get better. This school is the reason why I want to be who I am... I'll never be happy about leaving... but sometimes, it's better to grow up than grow down.

”

GRADUATING STUDENTS' TESTIMONIALS

“

I have changed completely over here. I was in a school where I felt that no one could understand me but over here everyone understands me. And it's fun being around and interacting with various things over here.

- Shlok Sheth (Studying at St. Xavier's College, Mumbai)



“

The teachers are very kind and helpful. I had difficulty understanding things first. Now I understand everything faster. So thank you all teachers.

- Vihan Rao (taking a gap year, during which has interned at Gateway)



“

It was a long long journey. Thank you to all the teachers, students and my friends of course, for being friends with me. Gateway gave me confidence that I did not have before. They gave me courage to endeavour in whatever I have to do and they supported me during the whole journey.

- Divinia Hemchand (Studying at Sophia's College)



“

It made me feel that everyone over here has different skills and different capabilities, but when they all are combined together as a team it can make a difference and anything is achievable. That's what I have learnt. I would say to the new ones who are coming to this school, it's ok to make mistakes. With mistakes you learn. The teachers over here are very helpful and they will help you.

- Sanyat Shirke (Studying at MET, pursuing A-levels)



THE CURRENT SCENARIO

26 million people with disabilities

40% of persons with disabilities have no access to education

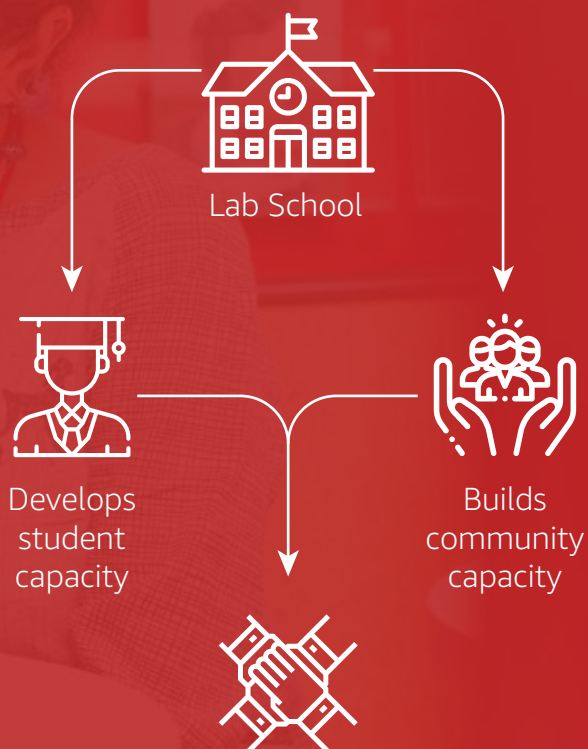
1 in every 2 persons with disabilities cannot read

Census 2011

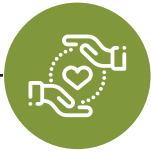


WHO WE ARE

The Gateway School of Mumbai is a not-for-profit organisation, dedicated to empowering children with learning difficulties.



OUR VALUES



We are
compassionate



We are
committed to
learning and
excellence



We
collaborate



We persevere
to reach our
goal of social
change

OUR PROGRAMMES

Each child's programme at Gateway is an integration of two core components: Curricular Programme + Individualized Programme



INDIVIDUALIZED PROGRAMME

The individualized programme is designed to optimize learning and development for each individual child.

One homeroom teacher serves as a child's advisor who oversees the child's individualized programme. The advisor, along with our multidisciplinary team of parents, teachers, therapists and students themselves, is responsible for identifying and prioritizing goals for the student. These goals may be an area of need such as speech and language development, sensory-motor development, socio-emotional development or foundational academic skills like reading, writing or executive function skills.

CURRICULAR PROGRAMME

The curricular programme is designed to provide the foundational knowledge and skills that all students deserve.

The curricular programme draws from evidence-based, academic standards and the NIOS and Cambridge curriculum. We incorporate the core disciplines of Language and Literacy, Humanities, Sciences, Mathematics, Information and Communication Technology, Arts and Physical Education.

The curricular programme is taught in age-appropriate groups by two or more teachers to ensure optimal differentiation for all students.

STUDENT IMPACT

We firmly believe that every child can learn and reach their potential, and our responsibility is to provide the opportunities to do so. We measure our student impact against student empowerment, community engagement, and readiness beyond school.

STUDENT
EMPOWERMENT

COMMUNITY
ENGAGEMENT

READY BEYOND
SCHOOL

STUDENT EMPOWERMENT

Student empowerment refers to how students have demonstrated agency in driving their own learning through different learning opportunities.

GRANDSTAND AND FILM-MAKING

Grandstand took student agency to a new level this year - with students initially making their own films, and then collaborating with external professionals- director, actors etc. - to make a short fiction film. They were part of the entire process of filmmaking from fundraising, to script writing, production, acting and editing.



ANNUAL DAY

This production was a first of its kind. Students were intensively trained in subject-specific performance skills. Some real-life exposure through this process included auditioning for their parts, working through multiple costume trials, and two whole days of technical rehearsals. The students exceeded all expectations and set a new benchmark for themselves.



COMMUNITY ENGAGEMENT

Community engagement is how students participate and engage with members beyond the Gateway community. This is our first step towards building an inclusive community.

SERVICE LEARNING PROGRAMME

This programme helps students look beyond themselves, to the needs of the larger society and explore how they could contribute using their talents and strengths. This past year, our students conducted a weekly activity class at Sevadaan special school and at Mankhurd children's home in Chembur. They invested a lot of time researching and carefully planning meaningful and fun-filled activities for the students.



READY BEYOND SCHOOL



of students have passed 10th and 12th exams on the first attempt. To date, 16 students have attempted their 10th and 12th grade exams.



graduating students are currently in mainstream settings

Ready beyond school measures how our students are being equipped for success beyond Gateway. In the younger years, this involves project work, field work and experiences out of Gateway. In high school, this involves internships, and student transitions out of Gateway.

- **Internships:** Our students engaged in both in-school and out-of-school internships in different fields such as design and innovation, packaging, education and advertising.
- **HSAP Community Visits:** Our high school students went on numerous community visits to Big Bazaar, Hypercity, chembur flea market to use their skills in real-world contexts.
- **Humanities Projects:** Middle School students deepened their learning through real-world engagements like purchasing groceries from local vendors, ordering food in restaurants, and participating in the clean up of Juhu beach.

COMMUNITY IMPACT

Gateway's vision of an inclusive society, where each person has what they need in order to be successful, is only possible in partnership with the larger community. Gateway partners with parents, families, professionals and organizations to further our vision.

PARENT PARTNERSHIP

At Gateway, parents and families work together with our team towards the common goal of serving our students.

PARENT SUPPORT GROUPS

Parent support group meetings are a space for parents to come together to not only support one another, but also learn from each other using different ways of expression, including puppetry and acting. This year, we saw our parents facilitating sessions focussed on the value of having friendships and support systems, that led to emotional sharings and invigorating discussions. Parents of our students who graduated this year, shared about their journey and learning over time - a session that left all of us inspired to continue to advocate for our children at all levels.



MINI WORKSHOPS WITH PARENTS

This year, we worked with our Gateway families to determine what areas they would want to know more about. Our team members conducted sessions with parents on communicating effectively, building reading habits, and building receptive and expressive language skills. **Parents left with hands-on strategies and tools they use with students at home.**

Person-centred planning with Sushama

Dr. Sushama Nagarkar has been working with families to help make transition plans and brainstorm ideas on how to plan for their child's future.



CAPACITY BUILDING

PROFESSIONAL DEVELOPMENT PROGRAMME 2018: OUR FIRST TEACHER TRAINING PROGRAMME

Gateway launched its first certificate Professional Development programme. **We had 43 participants from 23 organizations.**



“ At the end of every session I had a positive take-away that I could implement in my classroom. I tried a few from the last session and my children loved it...they were more engaged with what I was doing with them and they're looking forward to me doing something new with them the next time I enter class. ”

Cathedral and John Connon School

“ I always thought that a workshop like this would be only for students with special needs and I have always been teaching students from mainstream. But when I came in here, I realised that every kid could actually take away a lot of the learning we've had from these sessions. [The learning] would be easier implemented in a mainstream class and every student of mine could easily benefit from it. ”

Oberoi International School

100% USING STRATEGIES

INTERNS AT GATEWAY:

We had **23 interns** (our largest number yet!) last year across different disciplines. It was a wonderful learning experience for both our mentors and our interns, many of whom have now joined Gateway as full-time teachers.

GATEWAY GARDEN

Gateway is building our very own vegetable garden! This project first began as a small unit in one of our Humanities classes. The team loved the idea so much and wanted to continue the work, but we needed someone to drive it. Enter our support staff. The support staff at Gateway now drives this project independently while consulting with external experts. We do our own composting, grow herbs and vegetables like tomatoes, chillies and lemongrass. The garden serves as a learning opportunity for students and we hope to expand it further to engage the community at large.



STRIVING FOR EXCELLENCE

GATEWAY IS BEING RECOGNIZED FOR ITS WORK!



CHANGEMAKER
SCHOOLS

We have been an Ashoka Changemaker School since 2016, and continue to remain so after their 2018 audit. This is our fabulous team who spearheaded the process.



We have been invited as speakers at national and international panels, workshops and conferences on building inclusive practices and serving students with disabilities.

Presenting and publishing research in national and international conferences and journals

We had **373** professionals from across the world come to learn about our teaching and learning practices

PARTNERING FOR CHANGE!

LAUNCHING A SCHOOL IN INDORE

Gateway has launched its most ambitious initiative yet! We have partnered with a family to start a school for students with special needs in Indore. Shridha opened its doors to students in August 2019.



PARTNERING TO ACHIEVE SOCIAL CHANGE

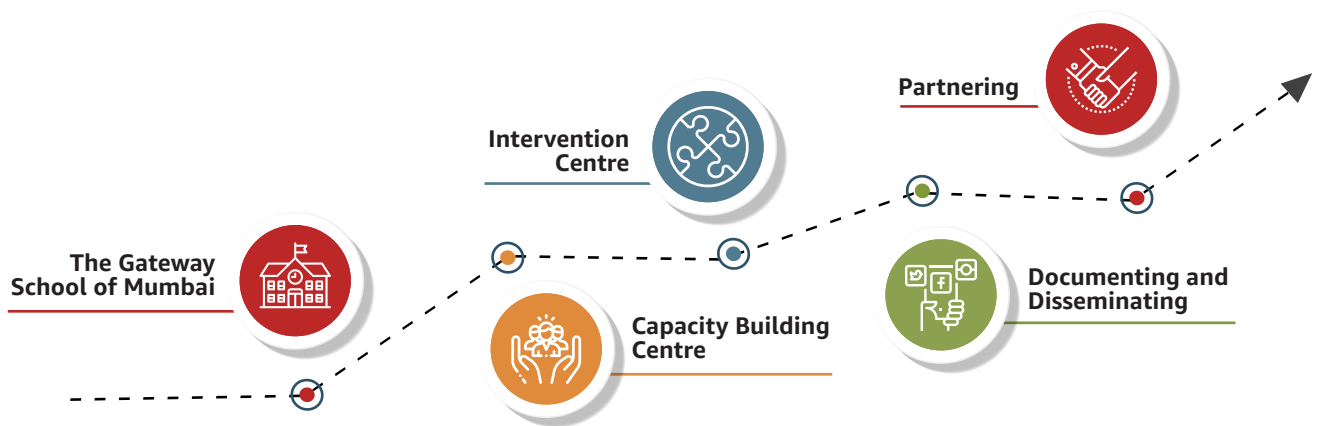
Gateway has partnered with like-minded organizations serving students with special needs through Gati, a consortium of organizations and schools driving inclusion. Together we have committed to supporting inclusion for low and middle-income schools in Mumbai.



THE FUTURE

Gateway endeavours to transform the landscape of special education. In the next 5 years we will:

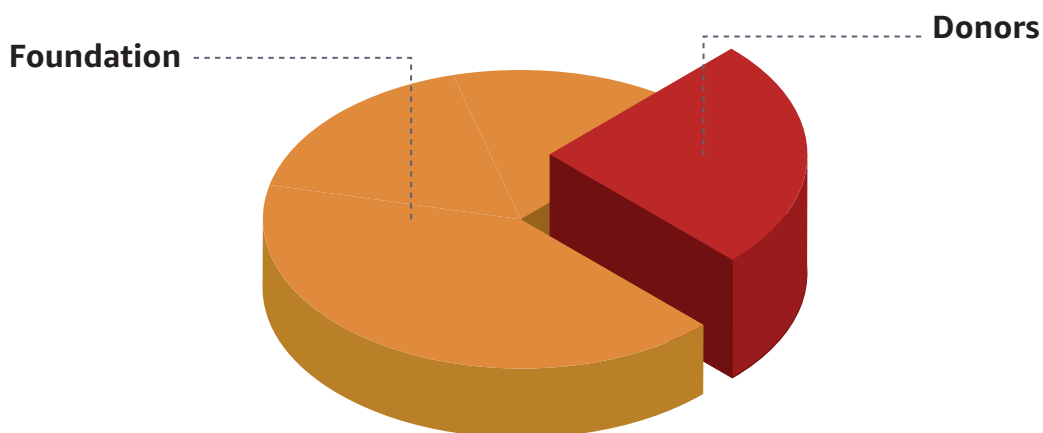
- Establish an intervention centre that will allow us to serve a broader range of student profiles. We will offer a wide range of services including mental health support, nutrition, therapies and remedial services.
- Continue growing our professional development programmes by building more courses and moving some of the courses online so more professionals can access them.
- Finally, in order to reach our vision of impacting the community at large, we will work on documenting and disseminating learning and research from our lab through our teaching channel, and by continuing to partner with like-minded organizations striving towards the same goals.



Access to quality education and services for people with disabilities

• 26 million people with disabilities • No access to education • Poor outcomes

OUR FINANCIAL SOURCES



WE NEED TO DIVERSIFY!